

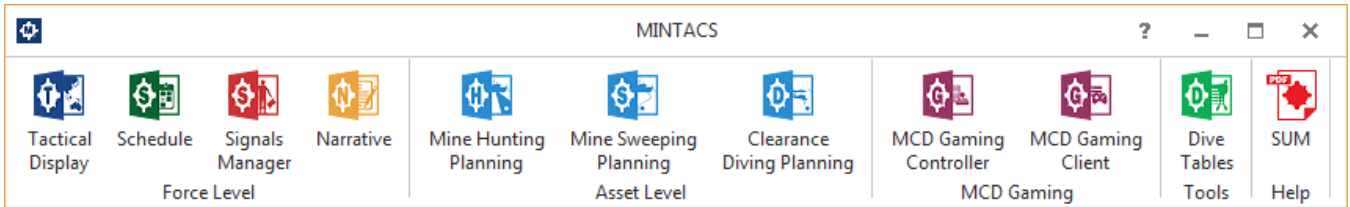
MINTACS

Mine Warfare Tactical Command Software

HQ

MWDC

CMS



MINTACS is one of the world's leading naval Mine Warfare Command Support Systems.

In service with host of countries around the world including the Royal Australian Navy, UK Royal Navy, Royal Malaysian Navy, United Arab Emirates Navy, and Royal New Zealand Navy, and soon to provide the Royal Swedish Navy with the our latest capabilities in support of their Mine Warfare Data System Project.

The software provides the Mine Warfare Force Commander with the latest technology to conduct both mining and mine counter measures in today's complex maritime environment.

MINTACS comes in three configurations to support the comprehensive needs of a Naval Mine Warfare Command.

- MINTACS HQ
- MINTACS MWDC
- MINTACS CMS

MINTACS HQ

MINTACS HQ is design to support the operation commander either in their home headquarters or in a deployed HQ.

MINTACS HQ is a comprehensive Tactical Command software suite which enables the Mine Warfare Force Commander and operations staff to plan missions, monitor tasking and conduct detailed assessment of mission progress from an individual asset or total force perspective.

MINTACS HQ integrates the core tools required to conduct MCM missions.

MINTACS MWDC

MINTACS MWDC is an extensive capability for the Mine Warfare Data Centre. The system provides the ability to manage a master database of all tactical and environmental data relevant to the Mine Warfare command.

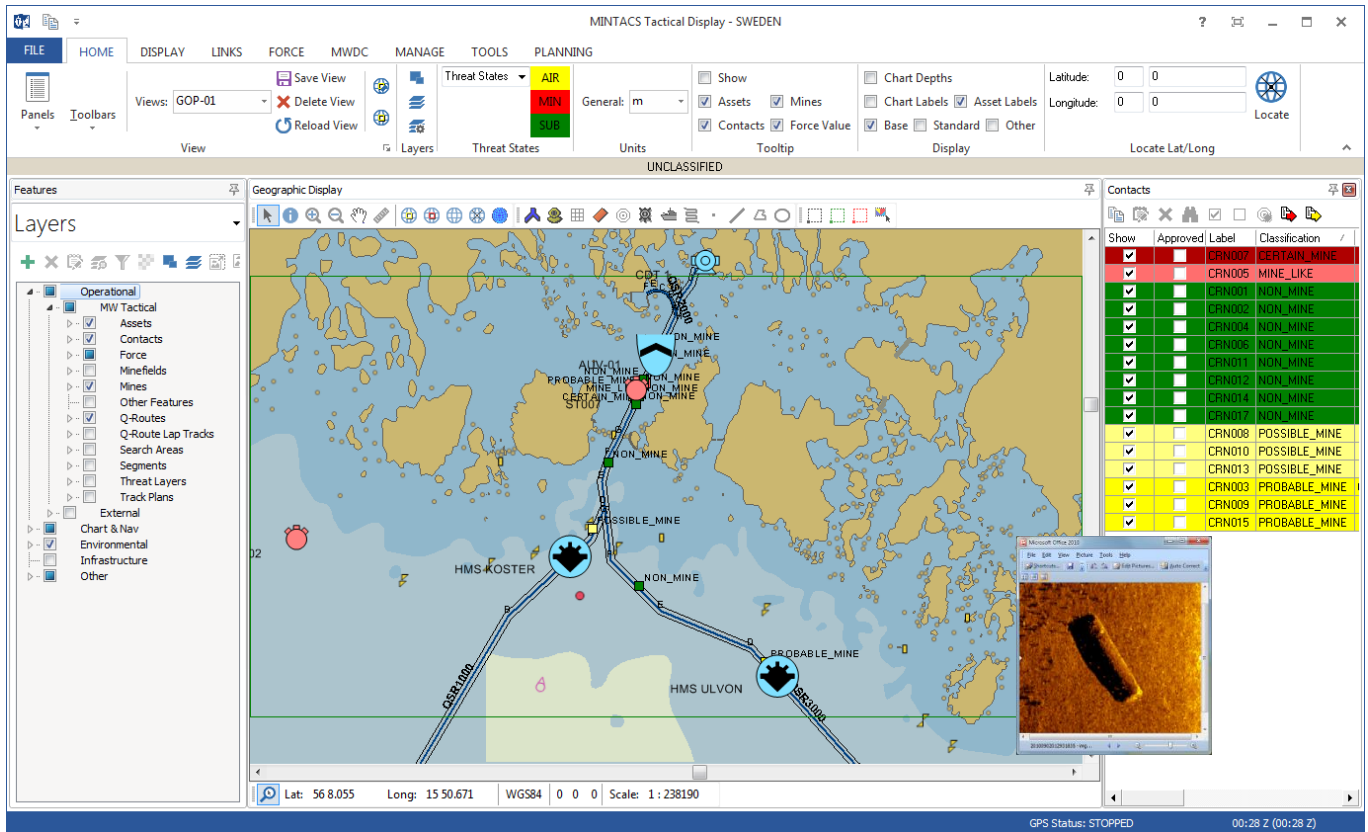
The Data Centre capability includes the storage and management of a comprehensive list of feature types in support of Naval Mine Warfare, including key features such as:

- Ambient Noise
- Bottom Reverberation
- Bottom Types
- Burial Probability
- Clutter Density
- Contacts
- Danger Areas
- Rock Area
- Sandwave Area
- Sediment Area
- Tidal Information
- Vegetation
- Water Column, including SVP
- Wreck

MINTACS CMS

MINTACS CMS (Combat Management System) is design to operate on-board a naval mine warfare vessel as a specialised capability to meet the needs of the specific ship.

The software is custom designed and configured to support the functions of the vessel, whilst capable of integration with the MINTACS HQ and MWDC systems of the Mine Warfare Command.



Tactical Display

The Tactical Display presents the backdrop of hydrographic and environmental data vital to informed decision making. It also provides the developing tactical picture of the mine warfare operation.

The Tactical Display supports the use of S-57 and S-63 Electronic Nautical Charts along with Digital Nautical Charts and images in a variety of formats including JPEG, GIF, TIFF and GeoTIFF.

The Tactical Display support various military standard symbology including MIL-STD-2525D and NATO APP-6, along with user customisable symbols.

Advanced algorithms are used to calculate mine clearance and threat. Inputs such as asset performance data can be selected from the database or entered directly into the tool.

The Tactical Display includes the Commanders Estimate Process, (also known as Military Appreciation or Planning Process) providing Mine Warfare Command with the ability to conduct Course of Action analysis for the optimum approach to a given situation.

The Tactical Display has the ability to import and export data from a wide variety of sources, including;

- S-57 / S-63
- AML 1.0, 2.1
- ESRI Shapefiles
- JPEG, GIF, BMP, TIFF, GEOTIFF
- GPS / AIS (NMEA)
- BAE Systems – NAUTIS
- Bluefin Robotics – Bluefin
- Hydroid – REMUS
- Atlas Elektronik – Koster CMS
- Shark Marine – Shark Navigator
- Cheaspeake - SonarWiz
- USN MEDAL
- UK RSDB
- NATO MCM Expert
- OTH Gold
- TMSS

Schedule

The Schedule provides the ability to manage both operational and non-operation tasks of a Mine Warfare Command.

The Schedule supports the ability to view task and serials in either a Gantt, Calendar or Grid view, along with issuing tasking signals and reporting of progress.

Signals Manager

The Signals Manager provides the ability to send and receive military signals conforming to the standard in various countries.

The Signals Management capability including both reading and writing of APP-11 and EXTAC mine warfare signals.

The entire MINTACS system is customisable for use within mine warfare operations, and at maritime and joint forces headquarters.

The standalone variant is suitable for laptops or individual workstation computers. The network variant has been cleared for installation on large classified networks.

MINTACS can also be customised to suit the specific requirements of a customer, including the interface to the tactical data system of the mine warfare naval vessels.

MINTACS has recently been updated to support the use of Autonomous Underwater Vehicles (AUVs).

About SfS

Solutions from Silicon (SfS) is a specialised Defence software engineering company, with a particular focus on Naval Mine Warfare Command Support Systems.

SfS was established over 20 years ago, with a goal to create the world-class software solutions.

Solutions from Silicon is an ISO9001:2015 software engineering company based in Sydney, Australia, with an office in the United Kingdom.

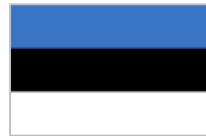
MINTACS is in use with navies around the world.



Australia



United Kingdom



Estonia



Malaysia



United Arab Emirates



New Zealand



Sweden



Solutions from Silicon Pty Ltd
Level 1
9 Help Street
Chatswood
New South Wales
Australia. 2067

+61 (0) 2 9495 9300

Solutions from Silicon Ltd
United Kingdom

+44 (0) 7793 318 994

www.sfs.com.au

Dec16